



## Courses & Training

### What is it

Masters/Post Graduate Diploma

### When is it

September 2023

### Where is it

NSCAP, Leeds

### What does it cost

£2,973 per year

# Psychoanalytic Observational Studies

## Programme Outline

Psychoanalytic Observational Studies is a part-time course which takes place in small-group seminars one day a week on Fridays.

The programme offers flexibility for students to complete modules at a pace that is appropriate to their personal and professional development and commitments. The majority of students take 3-4 years to complete the Post-Graduate Diploma and 3-5 years to complete the Masters. However it is possible to undertake the Post-Graduate Diploma in 2 years and the Masters in 3. Studying individual modules as CPD is also available.

### The programme content broadly divides into two areas:

1. The close psychoanalytic observation of infants and young children in their home or care setting and the application of psychoanalytic observation to the student's work setting and professional role.
2. Reading seminars and presentations on the historical underpinnings of theory and research in psychoanalysis, and seminal and contemporary studies in child development and the relational mind.

Completion of this course is a pre-requisite for the clinical training in child and adolescent psychotherapy.

Continued on the next page...



## Modular Structure

### **Infant Observation (2 years)**

Students will observe an infant's development from birth until their second birthday. This will be within the context of the infant's emotional relationships in an ordinary family and in their particular cultural context. This is a weekly observation for one hour in the infant's home. Every observation is written up in detail afterwards and discussion takes place in small group seminars focussing on the unconscious elements of emotional and relational development.

### **Work Observation (2 years)**

The experience of work is studied through close observation. The significance of unconscious dynamics, the multi-layered meaning of behaviour and the emotional responses of the worker are central to learning. This is considered in relation to the work setting, including the expectation and the pressures of the organisation in which students work, the experience of teamwork, and the student's professional role.

### **Psychoanalytic Theory & Personality Development (2 years)**

A critical understanding of the development of psychoanalytic theory using a range of primary texts is explored through fortnightly reading seminars. Alongside this there are 7 Personality Development workshops which take place on Saturdays. Students will be invited to think about the interplay of internal and external factors which underlie the development of personality through the life-cycle.

### **Child Development and the Relational Mind (1 year)**

Through a developmental framework, this module examines the complex inter-related play of mind/body to make sense of the micro-interactions between the developing child and their caregivers, through a fortnightly reading seminar. Methodological approaches are discussed to understand the dialogue between psychoanalytic observation and developmental psychology.

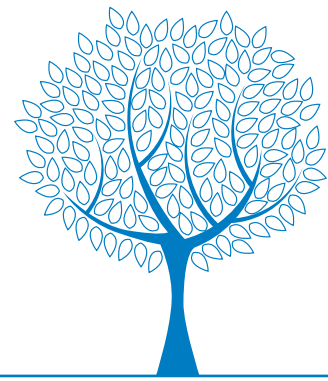
### **Young Child Observation (1 year)**

Based on the principles of infant observation, students are required to observe weekly for one year a pre-school child in a day care setting. Focus on an individual child and the child within the group is central in learning about the impact of widening social horizons and burgeoning language development.

### **Dissertation (1 year)**

Students going on to complete the Masters will be required to write a dissertation investigating a theme or topic of interest that has arisen from their observations and studies on this programme.

Continued on the next page...



---

### Learning Outcomes

1. Deepen and extend understanding of human development from a psychoanalytic perspective.
2. Develop an openness to imagine the unconscious experience of infants and young children in understanding their emotional and personality development.
3. Apply psychoanalytic observation in work with children/adolescents, within organisational settings to develop insights and enrich professional practice.

---

### Who should attend

The course is relevant to a wide range of professionals including teachers, mental health practitioners, nursery nurses, psychologists, social workers, support workers, psychiatrists, youth workers, nurses/midwives and allied professional disciplines.

---

### Cost

£2,973 per year  
£394 for the Saturday Personality Development Seminars

NB these prices are valid for 2023-24 only

---

### Date

The next intake of students will be in **September 2023**.

---

### Times

Fridays - 33 weeks per year

---

### Venue

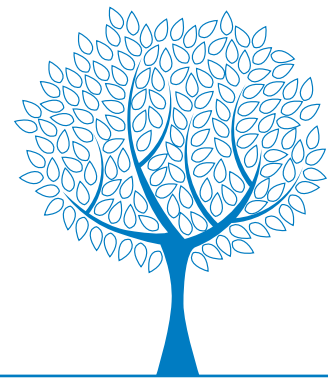
Leeds

---

### Validation

This post graduate course is accredited by the University of Leeds.

Continued on the next page...



---

## Course Fees

All students pay an annual registration fee of £912 (Year 1 & 2) or £754 (Year 3 and subsequent years) and then a further £515 per year for each module taken, including the dissertation module. Therefore a student undertaking four modules at once would pay £2,973 for the year. A student taking two modules at once would pay £1,942 for the year. In addition, there is a separate fee of £394 for the series of Personality Development seminars which some students will have undertaken before registering for the programme.

---

## How to Apply

Please visit: [www.nscap.org.uk/content/courses-and-training](http://www.nscap.org.uk/content/courses-and-training) for a link to the Leeds University applications webpage.

The closing date for applications is **Friday 17th March 2023**.

Students are considered on the basis of application forms, references, relevant work experience, and personal interviews.

Students are required to have at least one year's experience of working in a professional capacity with children, adolescents or families before commencing the course.

---

NSCAP is committed to continuing to deliver high-quality teaching that is responsive to the evolving external circumstances of the COVID-19 pandemic. For updates regarding the method of programme delivery in 2023-24 please refer to the NSCAP website.